

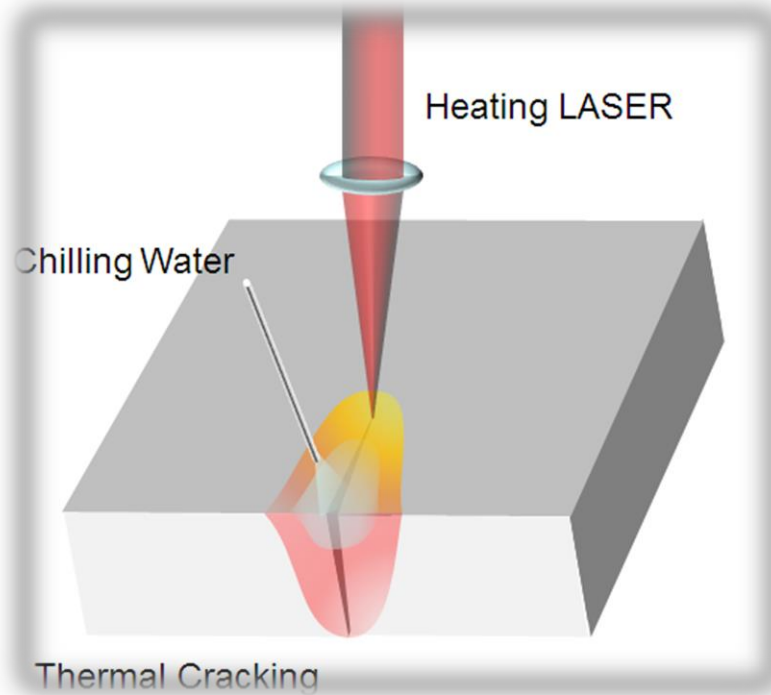


NANOPLUS TECH[®]

雷射切割事業處

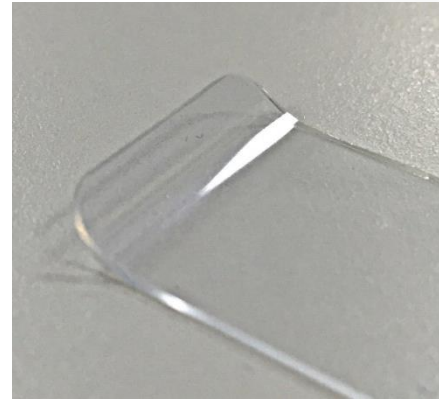
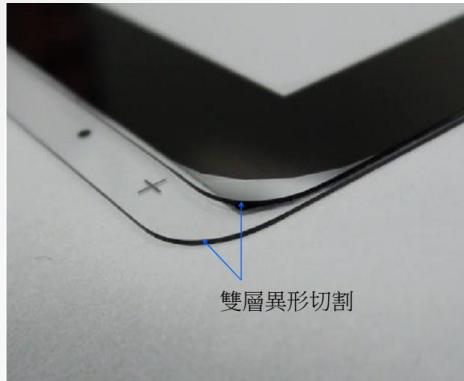
Nanoplus-LCT

雷射控制熱裂解 Laser Controlled Thermal Cracking

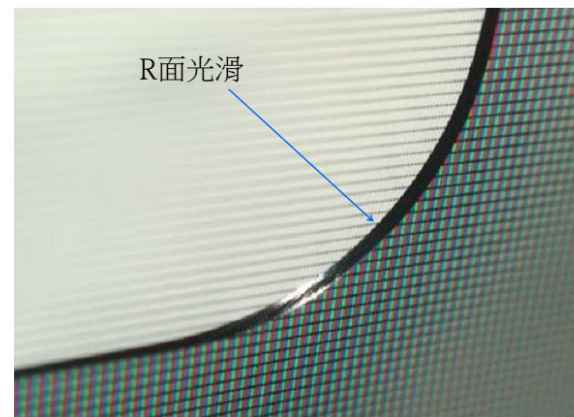
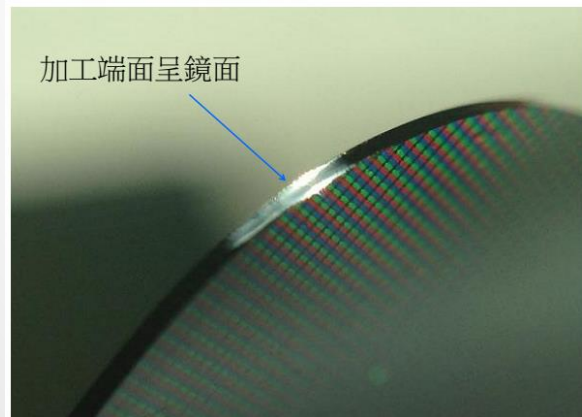


- Direct cut-through without damaging blue tape, breaking process is not necessary
- Crack-free, smooth cleaving surface
- 40~900 μ m thick, broad cutting range

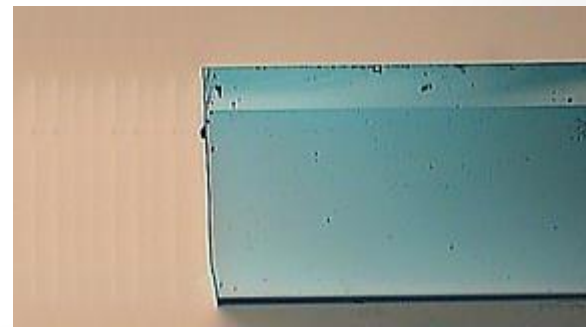
實際案例 I: 玻璃



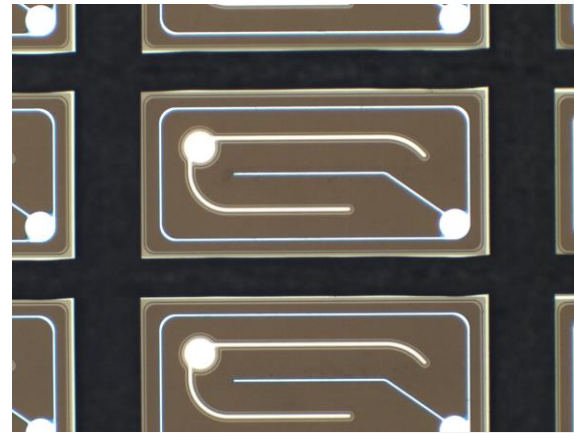
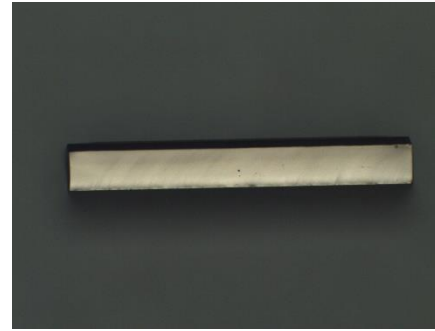
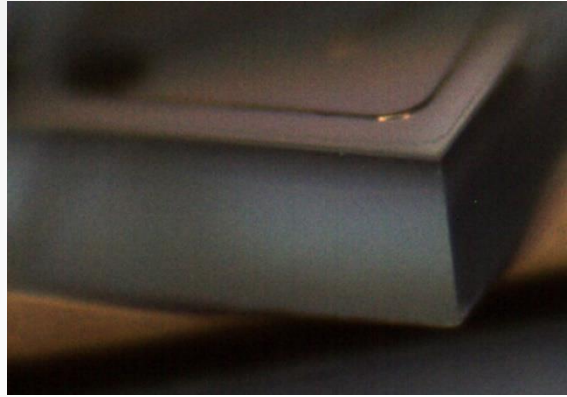
■ 切割端面粗糙度: $R_a=4.5\text{nm}$, $R_q=5.8\text{nm}$, $R_z=37.7\text{nm}$



實際案例 II: 藍玻璃 CCD/CMOS



實際案例 III: LED/半導體





NANOPLUS TECH®

納諾科技-雷射切割技術

適用於各種材質
高精度度切割